

## Sylvia Solochek Walters

#2- Ink     *Vintage*, 2015  
reductive woodcut with stencils and rubber stamp  
14" h x 20.5" w  
Courtesy of the Artist



## Gwen Samuels

#6- Ink      *Closed Encounters*, 2016  
ink-based digital images printed on transparency,  
hand-stitched  
36" h x 36" w  
Courtesy of the Artist





## Gina M

#11- Clay     *Reluctant Surrender*, 2016  
ceramic, oil glaze, wire  
18" h x 18" w x 16" d  
Courtesy of the Artist



## C.J. Mammarella

- #13- Ink     *The Adventures of Chanticleer and Partlet* from the  
*Grimms' Kinder Und Hausmärchen* Series, 2017  
ink (Pentel Stylo) and Copic markers on paper  
10" h x 10" w  
Courtesy of the Artist



- #14- Ink     *The Traveling Musicians* from the  
*Grimms' Kinder Und Hausmärchen* Series, 2017  
ink (Pentel Stylo) and Copic markers and  
color pencil on toned paper  
10" h x 10" w  
Courtesy of the Artist



## Sheri Chillingworth

#17- Clay     *Not Always Obvious*, 2017  
glazed ceramic  
15.5" h x 12" w  
Courtesy of the Artist



#18- Clay     *Not Always Seen*, 2017  
glazed ceramic  
15.5" h x 12" w  
Courtesy of the Artist



## Stanton Hunter

- #19- Clay     *Intimate Corners #5* from the *Intimate Corners* Series, 2016  
clay, slip mid-fired reduction, hard-slab construction  
8" h x 5" w x 4" d  
Courtesy of the Artist



- #20- Clay     *Intimate Corners #6* from the *Intimate Corners* Series, 2016  
clay hard-slab construction copper glaze,  
mid-fire reduction  
8" h x 6" w x 3.5" d  
Courtesy of the Artist



- #21- Clay     *Intimate Corners #7* from the *Intimate Corners* Series, 2016  
clay hard-slab construction cash glaze,  
mid-fire reduction  
8" h x 5" w x 4" d  
Courtesy of the Artist



## Chuka Susan Chesney

#22- Ink

*My Last Meal*, 2017  
watercolor, pen and ink, pastel  
12" h x 16" w  
Courtesy of the Artist





## David Avery

#25- Ink      *Running on Empty*, 2016  
hard-ground etching  
6" h x 6" w  
Courtesy of the Artist



#26- Ink      *Concerning the Great Ship MOUR-DE-ZENCLE*, 2016  
hard-ground etching  
12.75" h x 6.25" w  
Courtesy of the Artist



#27- Ink      *The Last Roundup*, 2017  
hard-ground etching  
6.875" h x 5.875" w  
Courtesy of the Artist



## Carolyn Liesy

#28- Ink

*Autumn Window 1/3, 2017*

lithograph

30" h x 22" w

Courtesy of the Artist



## Frederika B. Roeder

#31- Ink

*Calafia* from the *Riviera* Series, 2017

acrylic wash with fluid matte medium, interference, fluorescent (transparent), 18kt gold leafing pen, gold metallic bronze ink, iridescent (fine), coarse white paste, pearlescent-opaque, fluid acrylic, canvas partially primed with clear gesso

54" h x 48" w x 1.5 d

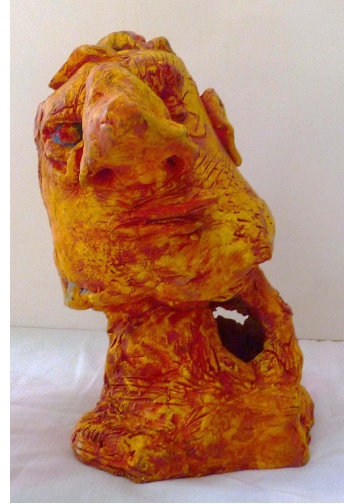
Courtesy of the Artist





## Abinghamfreeman

#37- Clay     *Head 6 Series*, 2016-2017  
clay, patina  
14" h x 11" w x 11" d  
Courtesy of the Artist



## Mariko Ishii

#41- Ink

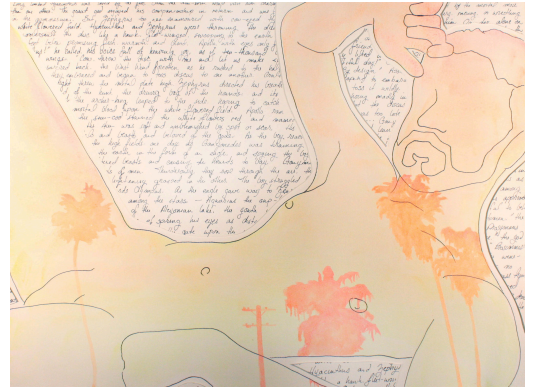
*Wind from the Cove*, 2017  
reduction linocut  
18" h x 24" w  
Courtesy of the Artist



## K Ryan Henisey

#44- Ink

*Disposition* from the *Views III* Series, 2017  
acrylic ink and sharpie pen on paper, paper collage  
18" h x 24" w  
Courtesy of the Artist



## Zengo Yoshida

#45- Clay     *1-SuperHeros, 1-EmojAttack, 1-Manga(comic)*  
*Invasion from the Pro Wrestler Masks*  
*for Millennials & Generation Z Series, 2017*  
porcelain slip cast, underglaze paint, cone 6 glaze  
7.5" h x 5.5" w x 7.125" d  
Courtesy of the Artist



## Karrie Ross

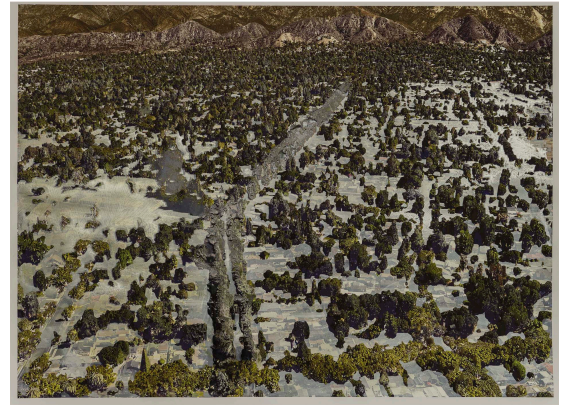
#46- Ink

*And IT Matters Why?* from  
*The Nature of Things* Series, 2016  
mixed media: ink, collage, watercolor, metal leaf  
30" h x 22" w  
Courtesy of the Artist



## Jennifer Chen

#53- Ink *Christmas Tree Lane-Altadena,  
CA\_34°10'48.84"N118°08'20.18"W\_  
elev1132ft. eyealt1519ft.1994\_20160313\_  
Cedrus deodara\_India\_1883-1885*  
from the *Succession-Landmarks* Series, 2016  
screen-printed digital print  
33" h x 45" w  
Courtesy of the Artist



## Vincent Suez

#55- Clay     *Grand Pre Escape*, 2016  
porcelain, Cu (red copper) glaze, cone 6, glazed and fired  
17" h x 11" w x 11" d  
Courtesy of the Artist



## Lisa Maher

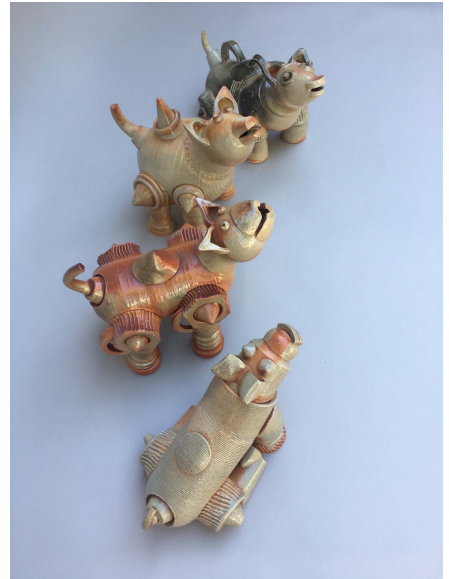
#58- Clay     *Family Tree*, 2016  
clay, glaze (hand-built, low-fire, electric kiln),  
wood, fiber, metal  
76" h x 22" w x 22" d  
Courtesy of the Artist





## Carol Ann Klimek

#59.2- Clay     *Low Rider, Hug Nut, Sock Dog, Rotundo*  
from the *Howling Quartet* Series, 2014-2015  
Shino glazed, high-fire ceramics  
13" h x 49" w x 18" d  
Courtesy of the Artist



## Sophia Tise

#62- Ink

*Moving Towards The Light*, 2017  
acrylic, ink and collage on linen  
40" h x 36" w  
Courtesy of the Artist



#63- Ink

*Walking in an English Winter*, 2017  
acrylic, ink and collage on canvas  
22.5" h x 24.25" w  
Courtesy of the Artist

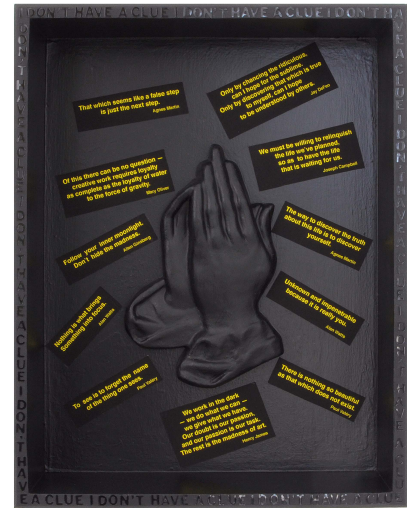


# Mariona Barkus

## #65- Clay

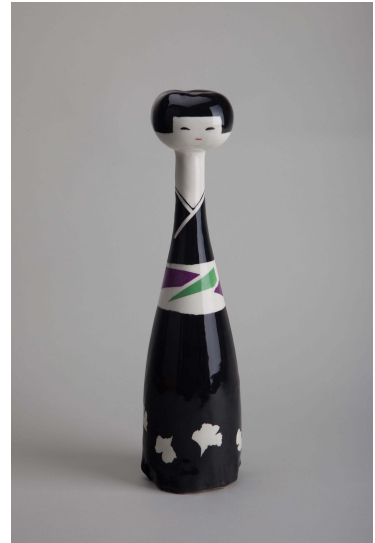
*Inspiration. Please. Inspiration, 2017*

ink-generated digital text on paper collaged into  
wooden box, acrylic paint and plastic letters on box,  
praying hands made using Paperclay in a candy mold  
11.5" h x 8.875" w x 2.625" d  
Courtesy of the Artist



## Sharyn Yoshimi

#66- Clay     *Kaki-Kokeshi 01a* from the *Ceramic Kokeshi* Series, 2017  
glazed ceramic (purple)  
13" h x 3.5" w x 3.5" d  
Courtesy of the Artist



#67- Clay     *Kaki-Kokeshi 02a and 03a* from the  
*Ceramic Kokeshi* Series, 2017  
glazed ceramic (blue)  
13" h x 3.5" w x 3.5" d  
Courtesy of the Artist



## Susan Spector

#69- Ink

*Big Bang II*, 2017

acrylic paint, Sumi Ink, pouring medium

24" h x 36" w

Courtesy of the Artist



## Julienne Johnson

#71- Ink

*Touched 012* from the *Touched Series*, 2017  
assemblage: plaster, Chinese ink, printer's ink,  
acrylic, gloves, rubber, paper, metal, plastic with  
collage over birch panel box  
53" h x 56" w x 6 d  
Courtesy of the Artist



## Annell Livingston

#74- Ink

*People of the Valley* from the  
*Quick Sketches to Studied Paintings* Series, 2017  
gouache on watercolor paper  
22" h x 30" w  
Courtesy of the Artist



## Sapira Cheuk

#75- Ink

*Leaf Cut*, 2016

ink and acrylic on paper

39" h x 42" w

Courtesy of the Artist





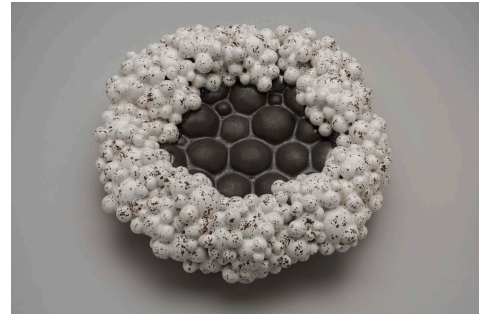
## Marie Nagy

#79- Clay *Pig*, 2016  
wheel-thrown, soda-fired stoneware  
9" h x 5.5" w x 5.5" d  
Courtesy of the Artist



## Barbara Frey

#81- Clay     *Beacon*, 2016  
hand-built, cone 6, porcelain  
3.5" h x 11" w x 11" d  
Courtesy of the Artist



## Babette Mayor

#83- Ink

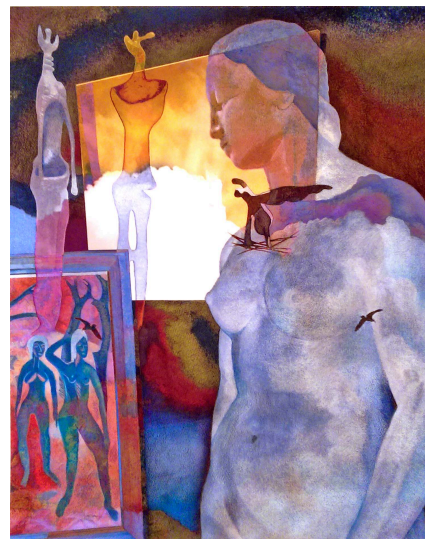
*Hello Northwest-Goodbye Southwest*

from the *Observer Series*, 2017

mixed media: ink and ink-generated digital media

20" h x 16" w

Courtesy of the Artist



## Raul Acero

#84- Clay     *Recuerdos 2*, 2017  
ceramic, Saggar-fired with stains and oxides  
5.5" h x 10" w x 5" d  
Courtesy of the Artist



#85- Clay     *Recuerdos 3*, 2017  
ceramic, Saggar-fired with stains and oxides  
7" h x 10" w x 9" d  
Courtesy of the Artist



## Sandra Camomile

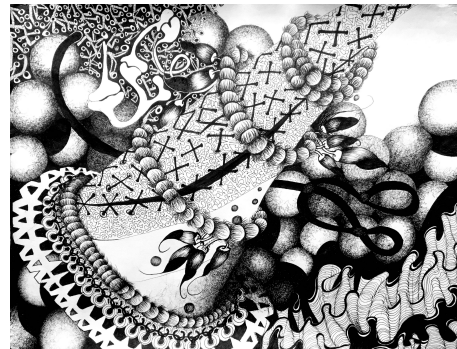
#89- Ink

*11/9 Anxiety Drawing \_03* from the  
*11/9 Anxiety Drawings* Series, 2017

ink on paper

17" h x 22" w

Courtesy of the Artist



## Francisco Alvarado

#92- Ink

*After Nice*, 2016

acrylic and ink on paper

22" h x 30" w

Courtesy of the Artist



## Matthew Brugger

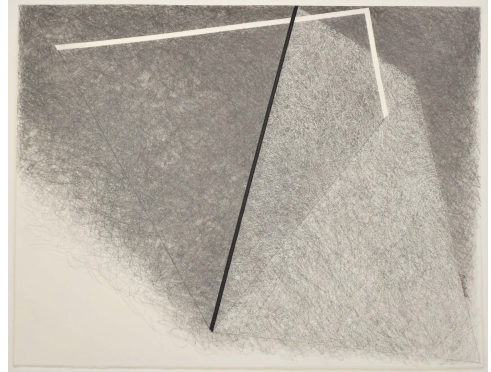
#94- Clay     *Sentry* from the *Clay Epoch* Series, 2016  
hand-built ceramic, oxide wash, and glaze  
53" h x 14" w x 11" d  
Courtesy of the Artist



## Diane Divelbess

#98- Ink

*Formal Thought Revisited - IV* from the  
*Formal Thoughts Revisited Series*, 2015  
graphite and ink drawing on paper  
9" h x 11.5" w  
Courtesy of the Artist





## Kevin Eaton

#100- Clay     *Metamorphia Jones*, 2017  
ceramic slab construction with carving, cone 5 glazes  
17.5" h x 15" w x 15" d  
Courtesy of the Artist



## Sab Weld

- #102- Clay      *Style* from the *Stories of Courage* Series, 2016  
clay, underglazes, oxides, encaustic  
23" h x 16" w x 16" d  
Courtesy of the Artist



- #103- Clay      *Lit Up* from the *Stories of Courage* Series, 2017  
clay, glaze, encaustic, underglaze  
25" h x 29" w x 16" d  
Courtesy of the Artist



## Naoto Ishikawa

#105- Ink

*Suite 450*, 2016

linocut reduction print, edition of 10

22" h x 35.25" w

Courtesy of the Artist



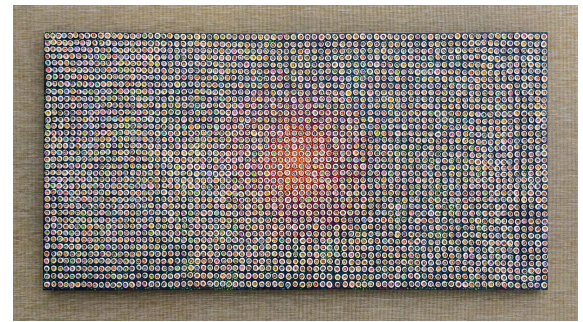
#106- Clay

*Kumo-no-Ito (The Spider's Thread)*, 2015

partially painted clay vessels on painted board

24" h x 48" w x 2" d

Courtesy of the Artist



## Joan G. Aebi

#109- Clay

*Shattered Family* from the *Refugees Series*, 2017  
cone 10 stoneware, mixed clay bodies,  
glazed with soda ash  
8.5" h x 10" w x 15" d  
Courtesy of the Artist



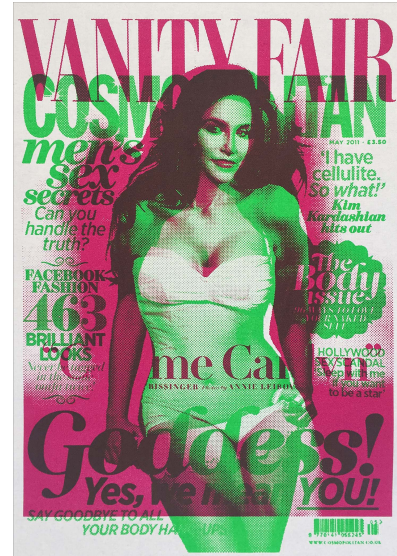
## Christy Johnson

#111- Clay     *Cracked Egg Series XXII* from the *Cracked Egg Series*, 2017  
nerikomi: stacked layers of colored porcelain are sliced through  
the cross section to reveal a pattern. Slices are rolled thin and  
arranged over a hump mold  
to form a vessel.  
5" h x 5" w x 6.5" d  
Courtesy of the Artist



## Howard Steenwyk

#113- Ink      *Goddess!*, 2017  
silkscreen print with "visitor interactive" filter  
31" h x 21" w  
Courtesy of the Artist



## Grace Eunchong Lee

#116- Clay     *Untitled No. 14, 2017*  
stoneware  
6.25" h x 5.5" w x 4.25" d  
Courtesy of the Artist



#117- Clay     *Untitled No. 17, 2017*  
stoneware  
5.25" h x 6" w x 3.5" d  
Courtesy of the Artist



## Patricia Post

#119- Ink

*Alive in Wild Places*, 2016

monotype: gum Arabic transfers from  
original artist's image; multiple plate drops  
32" h x 24" w

Courtesy of the Artist





## Gina Lawson Egan

#123- Clay

*Birth of Ten Goddesses, 2017*  
coil and slab-built clay with slips,  
stains, and glazes, cone 02  
19" h x 15" w x 36" d  
Courtesy of the Artist



## Gloria Lujan-Whitney

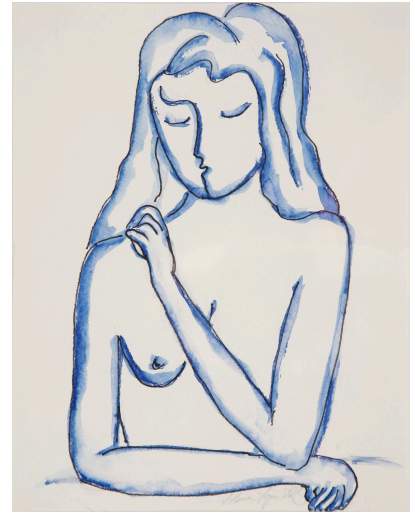
#124- Ink

*Lovely Lady*, 2016

ink wash on Japanese Paper

21" h x 17" w

Courtesy of the Artist



## John H. Hopkins

#129- Clay

*Porcelain Jar, 2017*

thrown and altered porcelain with slip and stamping

12" h x 11" w x 11" d

Courtesy of the Artist



## Stephen Horn

#134- Clay     *Haniwa Bird and Snake Vessels with Lid, 2017*  
wheel-thrown, mixed color clays,  
lizard skin glaze, fired cone 6  
24" h x 17" w x 9 ½" d  
Courtesy of the Artist



## Mark L. Hendrickson

#137- Clay

*Stonze 2* from the *Stonze Series*, 2017  
ceramic, stretched and manipulated clay:  
colored slips and oxide stain-fired to cone 2  
13" h x 11" w x 7" d  
Courtesy of the Artist



## Lee Middleman

#145- Clay

*Winter Ridge, 2017*

high-fire stoneware, wheel-thrown hand-textured, glazed  
6" h x 9" w x 9" d

Courtesy of the Artist



#147- Clay

*Cosmic Eggs, 2017*

porcelain, slip cast, Obvara low fire, cardboard carton  
2.5" h x 12" w x 8.5" d

Courtesy of the Artist



## Caroline Blackburn

#148- Clay      *No. 244, 2016*  
clay, thrown on wheel and hand-built, cone 10  
22" h x 10" w  
Courtesy of the Artist



#150- Clay      *No. 343, 2016*  
clay, thrown on wheel and hand-built, cone 10  
16" h x 16" w  
Courtesy of the Artist



## Zenka

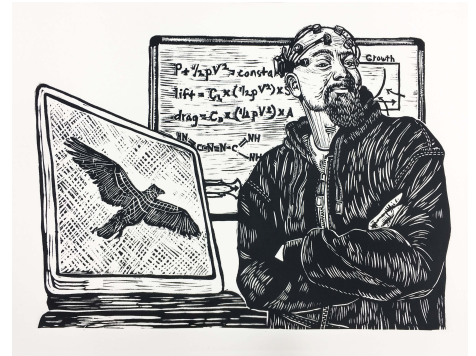
#151- Ink

*EEG Takes Flight, 2016*

linoprint with augmented reality overlay

20" h x 26" w

Courtesy of the Artist



#153- Clay

*Gameface Labs Mark V, 2016*

Raku, glass and wire

16.5" h x 12.5" w x 8" d

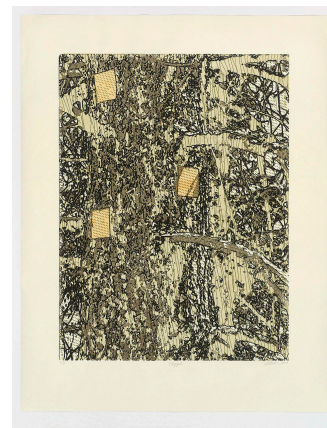
Courtesy of the Artist





## Barbara Foster

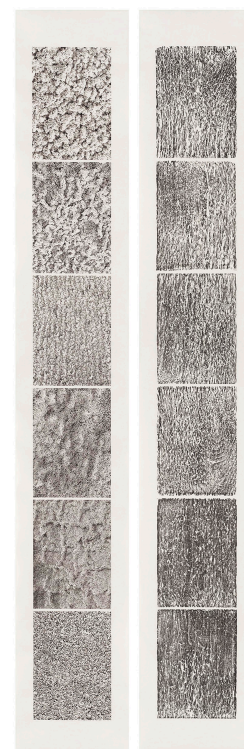
#154- Ink     *Tagged: Unit Boundary* from the  
*Floating Forrest Series*, 2017  
four-color laser-cut woodcut on  
Awagami Kozo thin white paper  
31" h x 23" w  
Courtesy of the Artist



#155- Ink     *L'I Burn Veil* from the *Floating Forrest Series*, 2017  
relief print collé on archival digital carbon print  
on Awagami Kozo natural  
23" h x 13.25" w  
Courtesy of the Artist



#156- Ink     *Trace* from the *Edge of the Pleistocene Series*, 2016-2017  
archival carbon print and relief prints on  
Awagami Kozo thin white paper  
83" h x 30" w  
Courtesy of the Artist



## Beatriz H. Jaramillo

#157- Clay     *Broken Landscape 3*, 2015  
porcelain and paraffine  
16" h x 8" w x 144" d  
Courtesy of the Artist



## Linda Lyke

#158- Ink

*Evolving Species*, 2017

etching and relief

18" h x 22" w

Courtesy of the Artist



## Mark Goudy

#161- Clay

*Curved Space* from the *Equipose* Series, 2017  
two closed forms: slip cast, burnished earthenware,  
colors and patterns created by painting soluble metal salts  
6" h x 18" w x 17" d  
Courtesy of the Artist



## Peter Baczek

#164- Ink     *Transit Twilight*, 2016  
lithograph  
20" h x 16" w  
Courtesy of the Artist



## Debra Self

#166- Ink     *Chimera*, 2017  
ink and watercolor on paper  
27" h x 9" w  
Courtesy of the Artist



## Nubia Bonilla

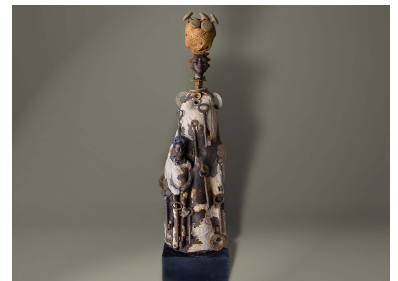
#167- Clay     *The Crossing (La Travesia)*, 2017  
ceramic, porcelain, Paperclay, Black Mountain clay,  
cone 10, iron  
35" h x 39" w x 20" d  
Courtesy of the Artist



#168- Clay     *The Funeral of Maria Del Rosario*, 2017  
ceramic, iron, porcelain, Black Mountain clay, cone 10  
21" h x 23" w x 13" d  
Courtesy of the Artist



#169- Clay     *The Guardian (La Guardiania)*, 2017  
ceramic, iron, wood, Black Mountain clay, cone 10  
29" h x 10" w x 9" d  
Courtesy of the Artist



## Kathryn Cirincione

#171- Ink

*All*, 2014

mixed media lithograph

11" h x 17" w

Courtesy of the Artist





## R. Giusti Dillon

#174- Ink     *Double Dutch - The Art of Play*, 2017  
ink, paper, collage  
20" h x 14" w  
Courtesy of the Artist



## Colin Yin

#177- Clay

*Yoon Bud Vase*, 2016

ceramics

5" h x 3" w x 3" d

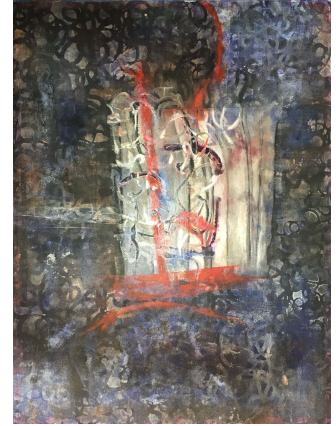
Courtesy of the Artist



## Adeola's Studio

#182- Ink

*Sprouting Spirits* from the *Evolution Unfold* Series, 2017  
mixed media: monoprint, skins, inks on Arches cover rag  
34" h x 28" w x 1" d  
Courtesy of the Artist



## Elyse Royce

#187- Clay

*Zuberi (Strong), 2017*

clay, wheel-thrown in sections and altered;

decorated with colored slip

27.5" h x 8.5" w x 9.5" d

Courtesy of the Artist



## Kyunghee Valdez

#193- Clay

*The City Life*, 2017

Babu porcelain and B mix, Latex and metal wire

8" h x 12" w x 12" d

Courtesy of the Artist



## CJ Jilek

#194- Clay

*Instinct 3 - Him & Her*, 2016

ceramic, stoneware, underglaze

Him: 34" h x 29 1/2" w x 28" d

Her: 22" h x 31" w x 21" d

Courtesy of the Artist



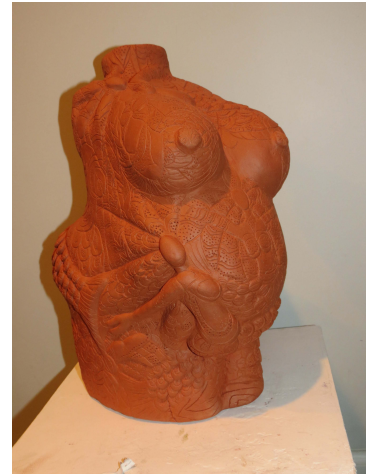
## Kerry Kugelman

#197- Ink     *Denouement*, 2016  
acrylic, ink, and charcoal on canvas over panel  
24" h x 24" w  
Courtesy of the Artist



## Ronda Brown

#200- Clay     *ContainHer* from the *Bow 2 the Altar*,  
*Divine Feminine Re-Arise Series*, 2017  
ceramic sculpture  
9" h x 6" w x 6" d  
Courtesy of the Artist





## Jennifer Vargas

#202- Clay

*Armor*, 2017

conceptual performance piece:  
insect screen metal mesh, paper fasteners,  
wire, molded using clay flower pots, human form  
representing the concept of "clay"

36" h x 24" w x 12" d

photos: 15" h x 12" w

Courtesy of the Artist

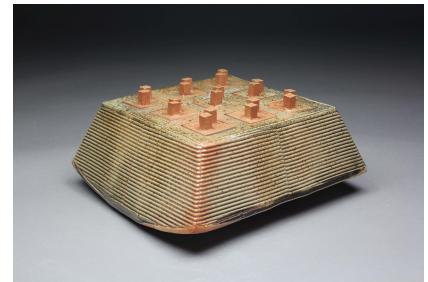


## Luciano Pimienta

- #203.1- Clay     *Three Boxes with Lattice Stand*, 2016  
stoneware rust engobe, interior Chun clear glaze  
7.5" h x 14.5" w x 5.25" d  
Courtesy of the Artist



- #203.2- Clay     *9 Lided Container*, 2016  
stoneware, B's Shino glaze with cedar ash  
11.25" h x 5.5" w x 5.5" d  
Courtesy of the Artist



## Jeff Reed

#207- Ink      *The Escalator*, 2016  
FW Artist's Ink on wood panel  
68" h x 32" w  
Courtesy of the Artist



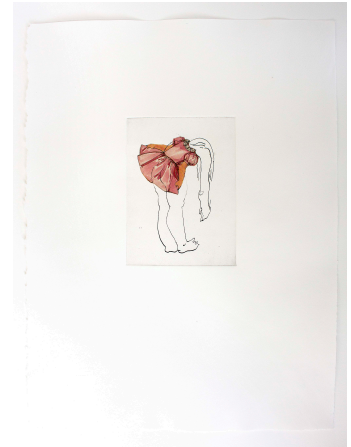
#208- Ink      *Man and Nature*, 2015  
FW Artist's Ink on wood panel  
8" h x 10" w  
Courtesy of the Artist



## Colleen M. Kelly

#210- Ink

*Curtsey* from the *Naked Under Her Clothes* Series, 2015  
monoprint with chine collé  
16" h x 11" w  
Courtesy of the Artist



#211- Ink

*Aqua* from the *Naked Under Her Clothes* Series, 2016  
monoprint with chine collé  
16" h x 11" w  
Courtesy of the Artist



## Wendy DeLeon

#214- Clay

*Across the Universe*, 2016-2017  
hand- and wheel-thrown raku forms,  
scrubbed wood  
16" h x 96" w x 48" d  
Courtesy of the Artist



## Jessica Gondek

#215- Ink     *Enterprising Machines I*, 2016  
woodcut and digital mixed media print  
16" h x 12" w  
Courtesy of the Artist



## Peter Van Ael

#217- Ink     *Nocturnal Encounter*, 2017  
woodcut reduction print  
20" h x 16" w  
Courtesy of the Artist



## Melanie Maria Ciccone

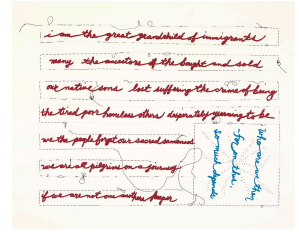
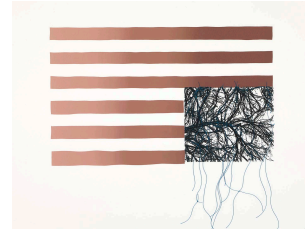
#218- Ink

*Flesh & Blood* from the (1 & 2) diptych Series, 2017

silkscreen, sewn thread

21" h x 27" w

Courtesy of the Artist





## Dusty Tailor

- #219- Ink *Blue Whale*, 2015  
color relief, serigraph on book cloth  
12"-100" h x 9" w x 4" d  
Courtesy of the Artist



- #220- Ink *Loin of California*, 2015  
metal etching with chine collé  
22" h x 15" w  
Courtesy of the Artist



## Liza Riddle

#222- Clay     *Elemental Palette #448* from the *Force Series*, 2017  
ceramic, soluble metal salts  
4.5" h x 12" w x 8.5" d  
Courtesy of the Artist



#223- Clay     *Elemental Palette #447* from the *Force Series*, 2017  
ceramic, soluble metal salts  
4" h x 13.5" w x 9" d  
Courtesy of the Artist

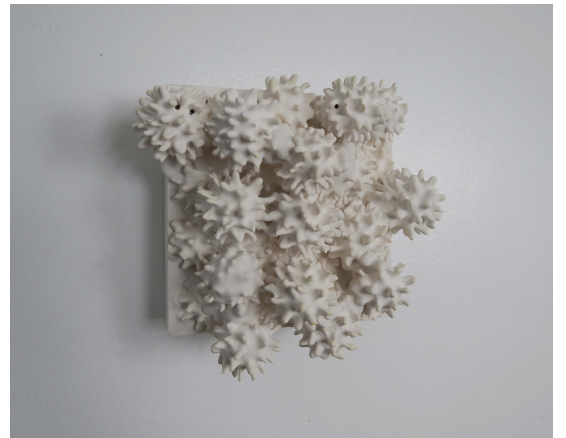


## Catherine Burce

#224- Clay     *May Gray*, 2016  
porcelain  
22" h x 84" w x 3" d  
Courtesy of the Artist



#226- Clay     *Shine On*, 2017  
porcelain cast into plaster panels  
7" h x 7" w x 5" d  
Courtesy of the Artist



## Robert Alexander

#229- Ink

*Response Number Three, 2016*

ink on paper, mixed media, collage

11" h x 46" w

Courtesy of the Artist

